



# HISTORY IN THE MAKING

RESONANCE  
SPELMAN COLLEGE GLEE CLUB NEWSLETTER

FEBRUARY  
2021



# WHAT'S INSIDE?

MESSAGES FROM THE DIRECTOR AND  
THE PRESIDENT

3

ALUMNA SPOTLIGHT

5

REFLECTIONS OF CHRISTMAS CAROL

7

LET'S CONNECT

10



# A MESSAGE FROM THE DIRECTOR

## **DR. KEVIN P. JOHNSON**

Director of the Spelman  
College Glee Club



While this has been a difficult year, the love and support from our glee alumnae have helped us to succeed. A year ago, I could not have imagined creating a concert that could be watched by people around the world, but, as usual, the Spelman College Glee Club amazed and inspired in ways never seen before. Now more than ever, we are creating history and leaving our mark in places our predecessors could not have dreamed of. We thank you for your guidance and inspiration as we continue to move forward in this virtual space and hope to make each of you proud.



**IMANI DIGGS, C'2021**

President of the Spelman  
College Glee Club

As a senior, my mind raced with anticipation on what a virtual Christmas Carol could look like. I was nervous, overwhelmed and quite sad that the physical tradition of Christmas Carol would not take place. However, seeing my Glee sisters, Doc, Boykin and Val put forth their best efforts to make this happen, encouraged me to bring my best self to the table. We have indeed made history, and I am honored to have had a hand in this monumental event!



# ALUMNA SPOTLIGHT

*HIGHLIGHTING OUR SISTERS  
MAKING STRIDES TO BETTER LIVES*

**BIANCA  
KEATON**

**CLASS OF 2005**



Ms. Bianca Keaton, C'2005 has taken the world by storm by being her authentic self. Ms. Keaton's dedication to inclusive politics and equal access to voting has been the driving force behind the historic turn of the state of Georgia in this past election as the chair of the Gwinnett County Democrat Party. She is the first Black woman and the youngest to occupy the post. The democratic lead in this state would not have been possible had it not been for Black women like Ms. Keaton strategically and brilliantly increasing voter participation in marginalized counties.

The Glee Club was proud to award Ms. Keaton with the 2020 *We Are Christmas* Award at the 2020 Glee Club Alumnae Christmas Carol Brunch.

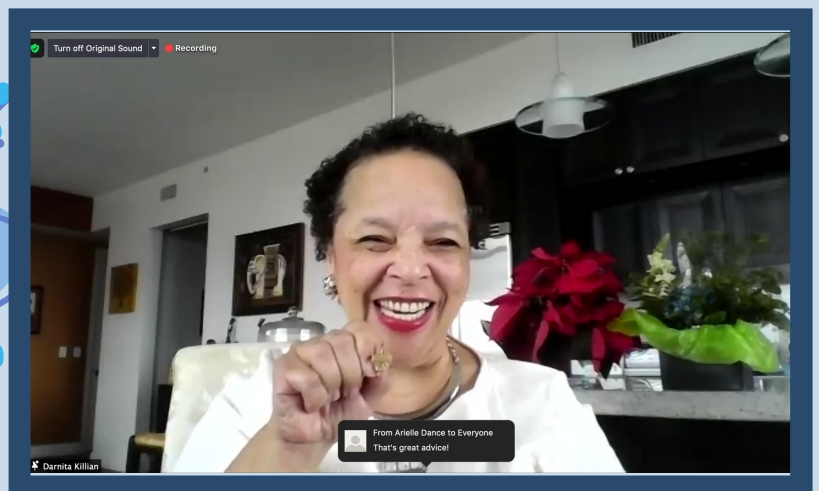
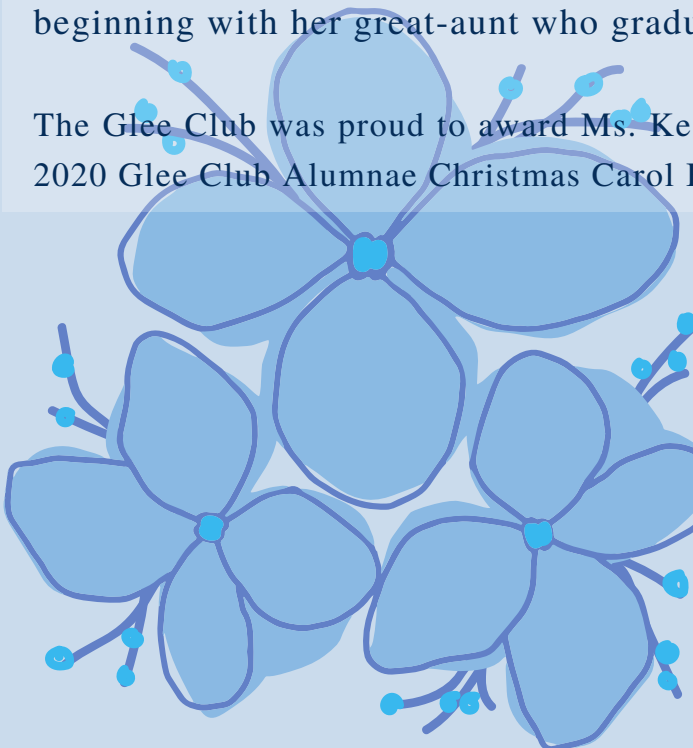


**DR.  
DARNITA R. KILLIAN**

**CLASS OF 1979**

Dr. Darnita R. Killian is a 1979 graduate of Spelman College. Following graduation from Spelman, she matriculated at Clark Atlanta University earning an MBA in 1982. Her education was completed at the University of San Francisco where she received her doctorate in education in 1996. Killian began her professional career in 1982 as a higher education administrator. During her 35-year long career she held appointments at Spelman College, Harvard University, Emory University, University of San Francisco and Pace University in NY, NY. She retired in 2018 from Spelman College as the Vice President for Student Affairs. She was also awarded Fulbright Scholarships to Germany and Japan. Dr. Killian is a lifelong member of Delta Sigma Theta Sorority, Inc. Lastly, 16 members of her family have attended Spelman College beginning with her great-aunt who graduated in 1897.

The Glee Club was proud to award Ms. Keaton with the 2020 *Pearl of Wisdom Award* at the 2020 Glee Club Alumnae Christmas Carol Brunch.







**BEHIND THE SCENES:**

**RECORDING FOR THE FIRST VIRTUAL CHRISTMAS CAROL**



**WHAT WAS YOUR FAVORITE PART OF RECORDING FOR CHRISTMAS CAROL?**

My favorite part of Christmas Carol this year was watching with my family. They heard me singing in the house all semester and were eager to see the finished product, so to see the awe in their faces was heartwarming! They were so proud of what we were able to pull off.

**-Gabrielle Davis, C'2023**

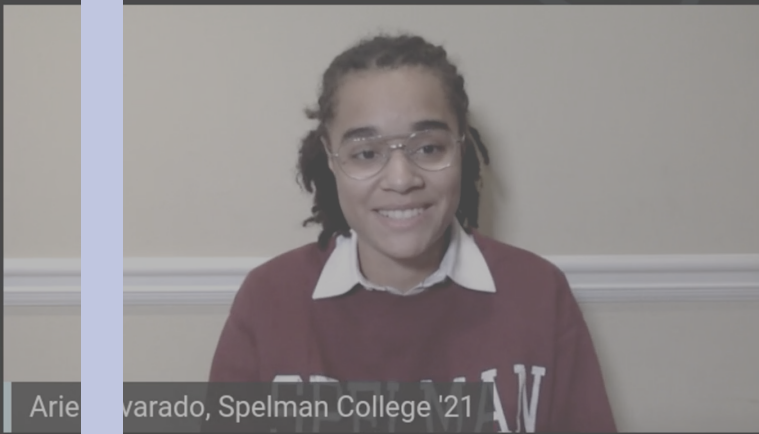


## WHAT INSPIRED YOU TO STAY MOTIVATED IN THIS TIME?

Coming into the first full semester of online classes, I found it really difficult to connect with my Spelman sisters and enjoy my Spelman experience. The one aspect that changed my perspective was coming to glee. Each glee club zoom call made me feel as if I were right back on campus, and my glee sisters were more kind and supportive than ever. As we continue to work together and create music, I become more and more invested our success and the pathways that we are creating for other young black women.

-Jordan Bobo, C'2023





## WHAT IMPACT DO YOU THINK CHRISTMAS CAROL HAD ON THE WORLD?



I feel that our virtual Christmas Carol was truly a beacon of hope in the dark times of COVID. Many people were expecting to forego a tradition they have been participating in for years because we weren't able to meet in person. Instead we were able to pioneer a virtual environment and continue provide Christmas cheer for everyone to enjoy from the comfort and safety of their homes. I'm excited to have been a part of something so amazing!

-Taylor Turner, C'2023



LET'S STAY  
CONNECTED



SCGC



@spelmanglee

[www.spelman.edu/gleeclub](http://www.spelman.edu/gleeclub)